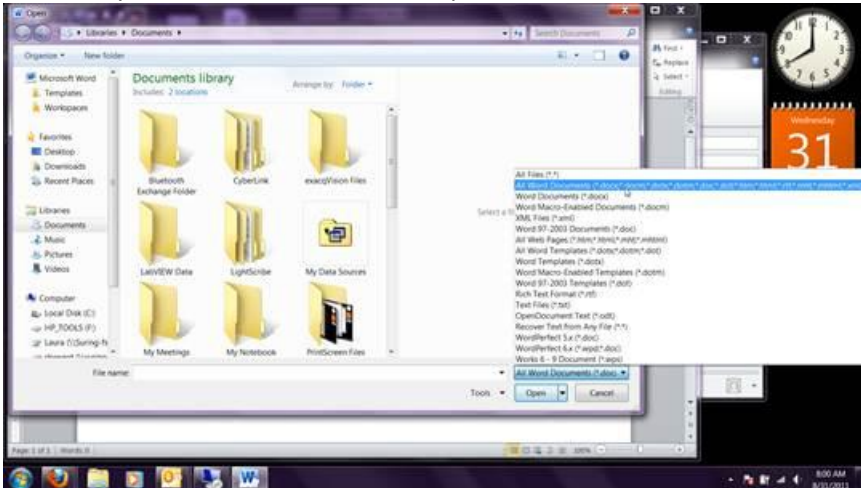


To find all your word documents in the new version:

1. Open Microsoft Word 2010, click file, click open:



2. Click Computer in the left column. Find your **H drive**, it should have your username listed next to it somewhere after clicking Computer.
3. At the bottom right of the open window click the file type list. That list will expand and at the top should be the option to find all word documents. Click that and you should now be able to see all of your word documents from previous versions.



If you still have problems finding things contact me and I'll try to help.